

AXIAL ROLLING SYSTEMS

A-01 / A-01 G / A-01 LH / A-01 G LH

∅ Shank (D)	20 mm.	3/4"	16 mm.	5/8"
-------------	--------	------	--------	------

for right-hand threads

- A-01 to be used stationary only
- A-01 G for stationary and rotary use
- A-01 LH, A-01 G LH (Left hand heads are dimensionally the same as right hand heads but open and close on the opposite direction.)
- inclined position of rolls = 3°30'
- weight without rolls = approx. 0.4Kg.

a= Pull off for opening

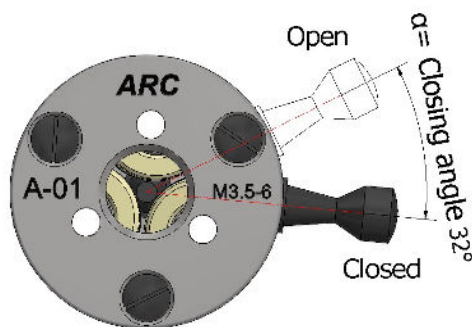
b= head opens type A-01 G, closes type A-01

c= head opens type A-01, closes type A-01 G

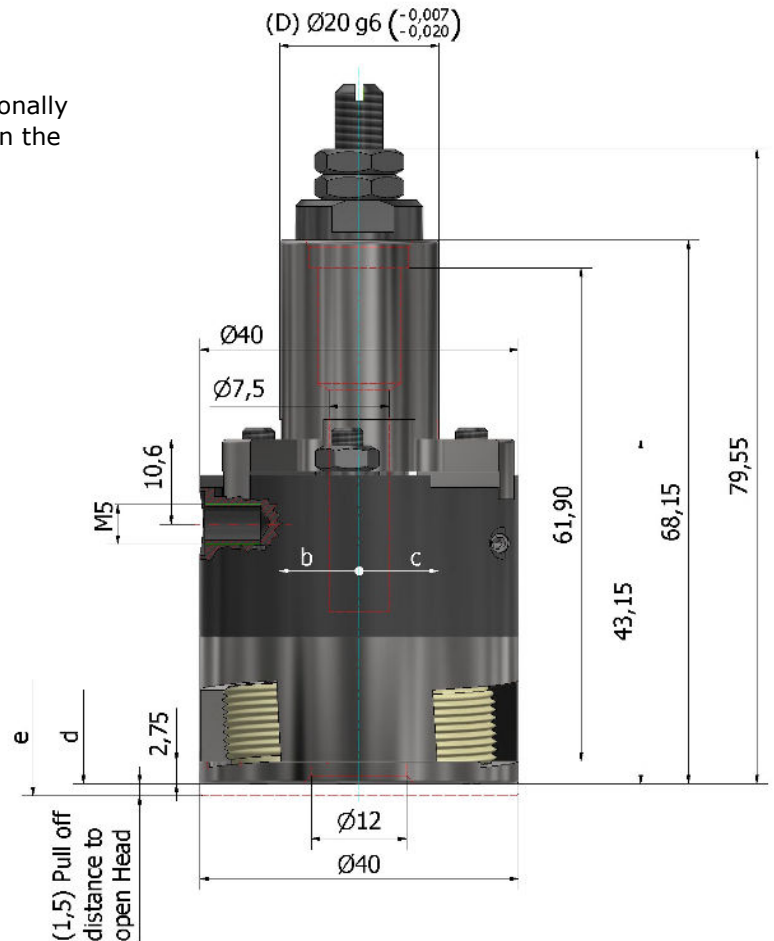
d= Rolling Head closed

e= Rolling Head opened

α= Closing angle 32°



General dimensions

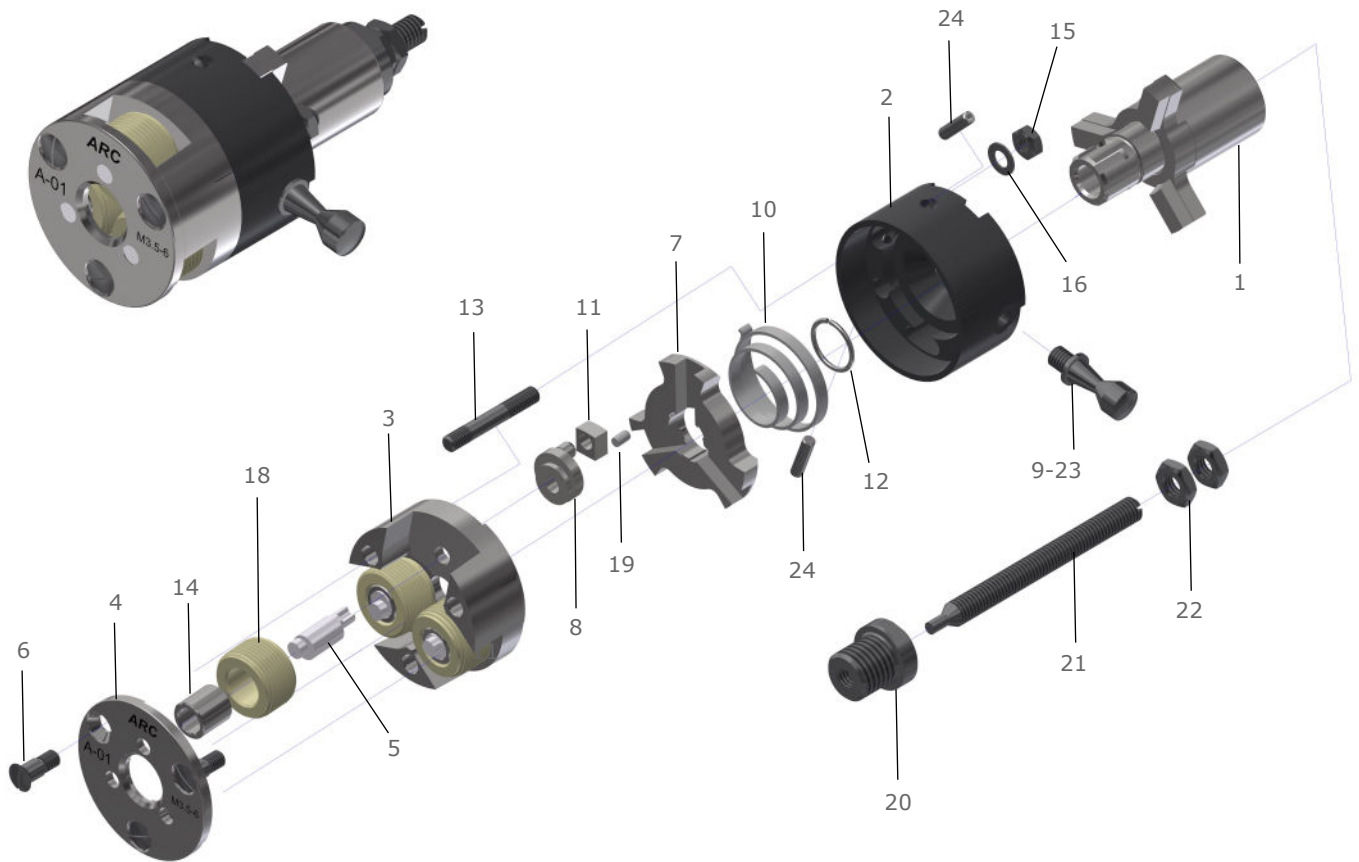


Working range

M	MF	UNC	UNF	BSW
M 3.5 x 0.6	M 4 ... 5 x 0.5	UNC 8 - 32	UNF 6 - 40	BSW 5/32 - 32 BSW 3/16... 7/32 - 24
M 4 x 0.7		UNC 10... 12 - 24	UNF 8 - 32	
M 4 ... 4.5 x 0.75		UNC 1/4 - 20	UNF 10 - 32	
M 5 x 0.8			UNF 12 - 28	
M 5 ... 5.5 x 0.9			UNF 1/4 - 28	
M 6 x 1				
BSF	RAA			
BSF 3/16 - 32	∅3.5 ... ∅4 x 0,5 ~ ∅5.5 ... ∅6 x 1.2			
BSF 7/32 - 28				
BSF 1/4 - 26				

SPARE PARTS FOR ROLLING HEADS

A-01 / A-01 G / A-01 LH / A-01 G LH



Spare parts list for rolling heads

Part. No	Qty.	Part Description
1	1	Shank
2	1	Spring Housing
3	1	Middle plate
4	1	Front Plate
5	3	Eccentric Pins
6	3	Pillars
7	1	Driving Plate
8	3	Ball Lever
9-23	1	Handle
10	1	Spring
11	3	Hardened Slides
12	1	Circlip

Part. No	Qty.	Part Description
13	3	Stud
14	3	Carbide Bushing
15	3	Hexagon Nuts
16	3	Washer
18	3	Thread roll
19	3	Shear Pins
20	1	Sleeve
21	1	Stop Screw
22	2	Lock Nut