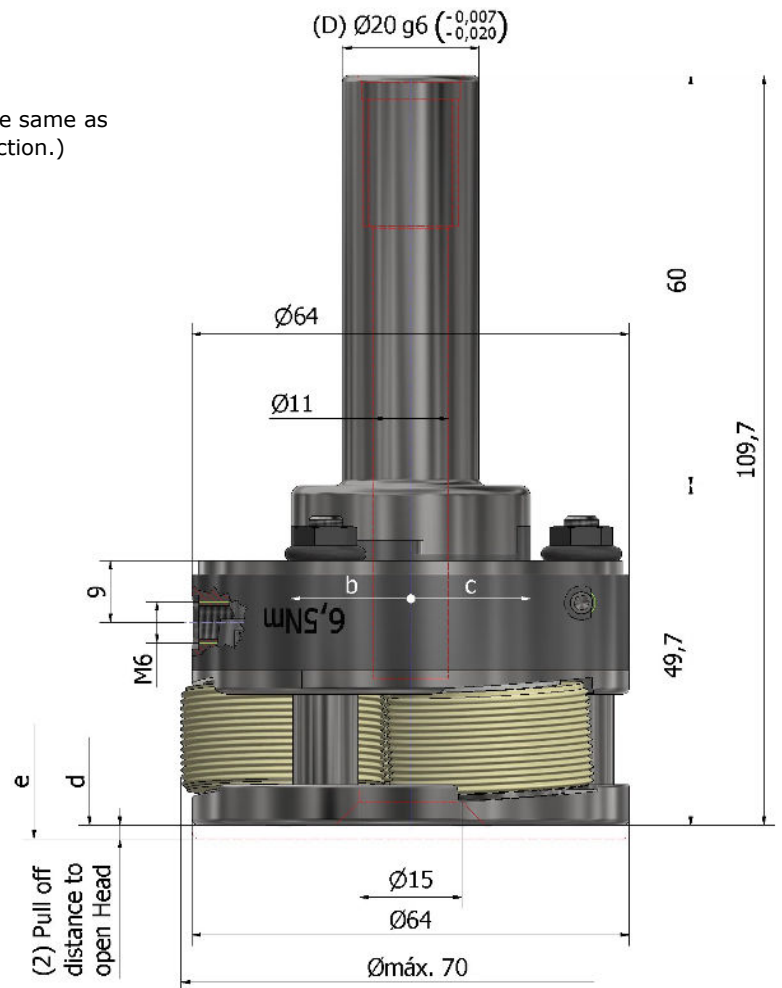


## AXIAL ROLLING SYSTEMS

### A-1 / A-1 G / A-1 LH / A-1 G LH

| ∅ Shank (D) | 20  | 25  | 3/4" | 1" | 1"1/4 | VDI 20 | VDI 25 | VDI 30 |
|-------------|-----|-----|------|----|-------|--------|--------|--------|
|             | mm. | mm. |      |    |       |        |        |        |

### General dimensions



#### for right-hand threads

- A-1 to be used stationary only
- A-1 G for stationary and rotary use
- A-1 LH, A-1 G LH (Left hand heads are dimensionally the same as right hand heads but open and close on the opposite direction.)
- inclined position of rolls = 3°30'
- weight without rolls = approx. 0.9Kg.

a= Pull off for opening

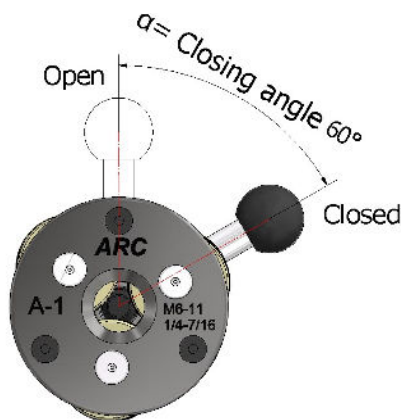
b= head opens type A-1 G, closes type A-1

c= head opens type A-1, closes type A-1 G

d= Rolling Head closed

e= Rolling Head opened

α= Closing angle 60°

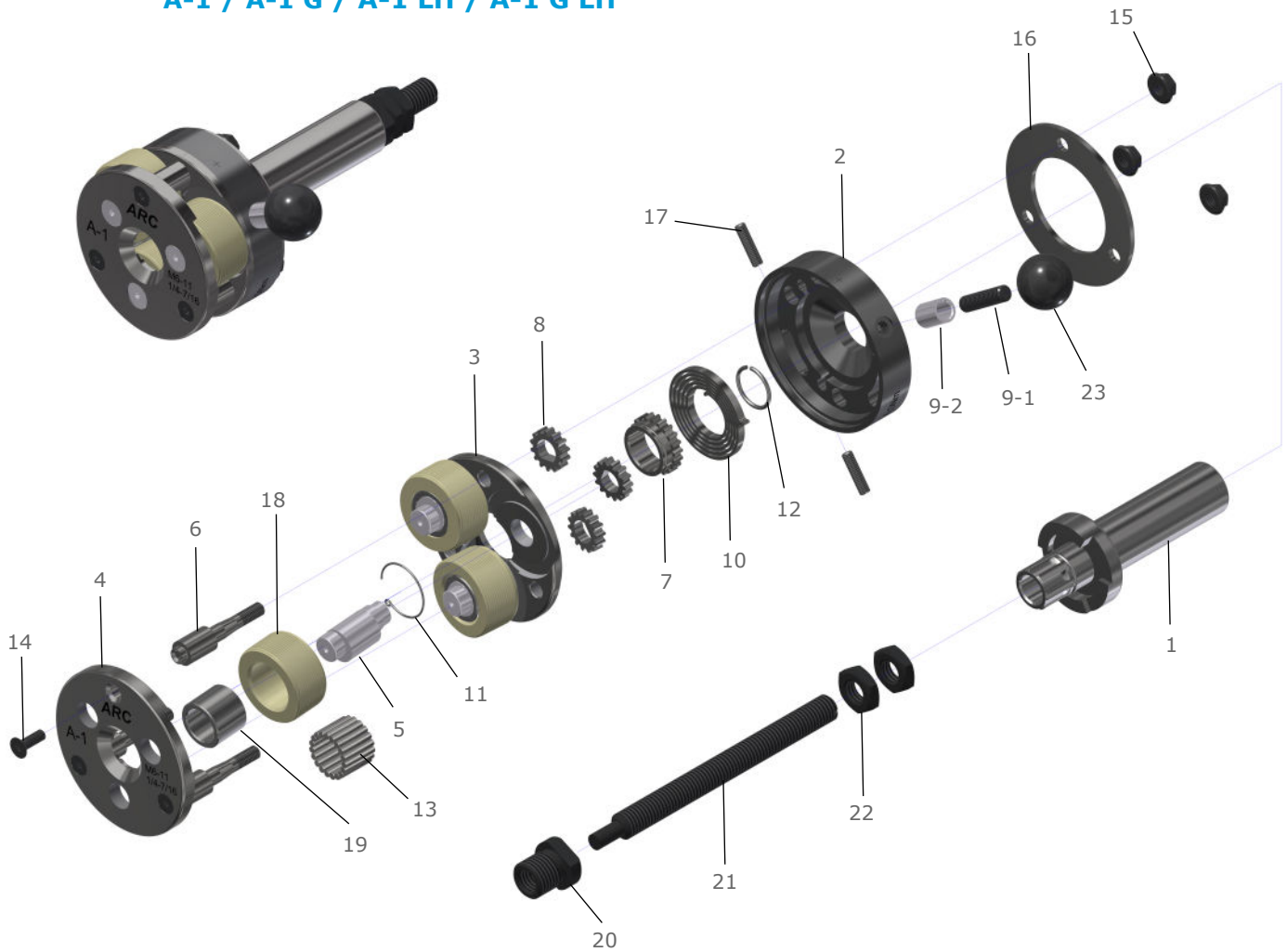


### Working range

| M                | MF                 | UNC            | UNF                  | BSW           |
|------------------|--------------------|----------------|----------------------|---------------|
| M 6 ... 8 x 1    | M 6 ... 8 x 0.75   | UNC 1/4 - 20   | UNF 1/4 - 28         | BSW 1/4 - 20  |
| M 8 ... 9 x 1,25 | M 8 ... 10 x 1     | UNC 5/16 - 18  | UNF 5/16... 3/8 - 24 | BSW 5/16 - 18 |
| M 10 x 1,5       | M 10 ... 11 x 1,25 | UNC 3/8 - 16   | UNF 7/16 - 20        | BSW 3/8 - 16  |
|                  |                    | UNC 7/16 - 14  |                      |               |
| BSF              | G                  | NPT<br>NPTF    | RAA<br>RGE           |               |
| BSF 1/4 - 26     | G 1/16 - 28        | NPT 1/16 - 27  | ∅6 ... ∅ 8 x 0,5     |               |
| BSF 5/16 - 22    | G 1/8 - 28         | NPT 1/8 - 27   | ~                    |               |
| BSF 3/8 - 20     |                    | NPTF 1/16 - 27 | ∅8 ... ∅ 10 x 2,0    |               |
| BSF 7/16 - 20    |                    | NPTF 1/8 - 27  |                      |               |

## SPARE PARTS FOR ROLLING HEADS

A-1 / A-1 G / A-1 LH / A-1 G LH



### Spare parts list for rolling heads

| Part. No | Qty. | Part Description   |
|----------|------|--------------------|
| 1        | 1    | Shank              |
| 2        | 1    | Spring Housing     |
| 3        | 1    | Back Plate         |
| 4        | 1    | Front Plate        |
| 5        | 3    | Eccentric Spindles |
| 6        | 3    | Spacer Studs       |
| 7        | 1    | Center Gear        |
| 8        | 3    | Outer Gear         |
| 9-1      | 1    | Handle Stud        |
| 9-2      | 1    | Handle bushing     |
| 10       | 1    | Spring             |

| Part. No | Qty. | Part Description    |
|----------|------|---------------------|
| 11       | 1    | Circlip             |
| 12       | 1    | Circlip             |
| 13**     | 57   | Needle Bearings     |
| 14       | 3    | Cap Screw           |
| 15       | 3    | Hexagon Nut         |
| 16       | 1    | Ring Washer         |
| 17       | 2    | Head stud           |
| 18       | 3    | Thread Roll         |
| 20       | 1    | Stop Sleeve         |
| 21       | 1    | Stop Screw          |
| 22       | 2    | Stop Screw lock-nut |

\*\* on request can be supplied with carbide bushings.  
Part No.: 19 Quantity: 3