

## AXIAL ROLLING SYSTEMS

### A-12 / A-12 G / A-12 LH / A-12 G LH

∅ Shank (D)	20	25	3/4"	1"	1"1/4	VDI 20	VDI 25	VDI 30
	mm.	mm.						

#### for right-hand threads

- A-12 to be used stationary only
- A-12 G for stationary and rotary use
- A-12 LH, A-12 G LH (Left hand heads are dimensionally the same as right hand heads but open and close on the opposite direction.)

- inclined position of rolls = 1°50'
- weight without rolls = approx. 0.9Kg.

a= Pull off for opening

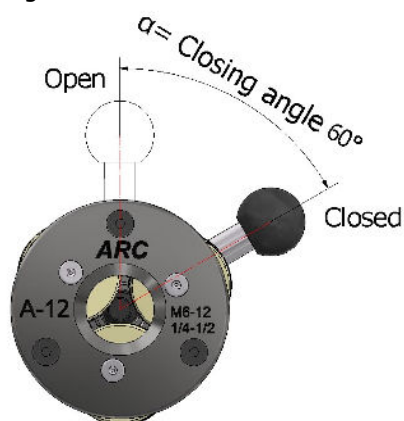
b= head opens type A-12 G, closes type A-12

c= head opens type A-12, closes type A-12 G

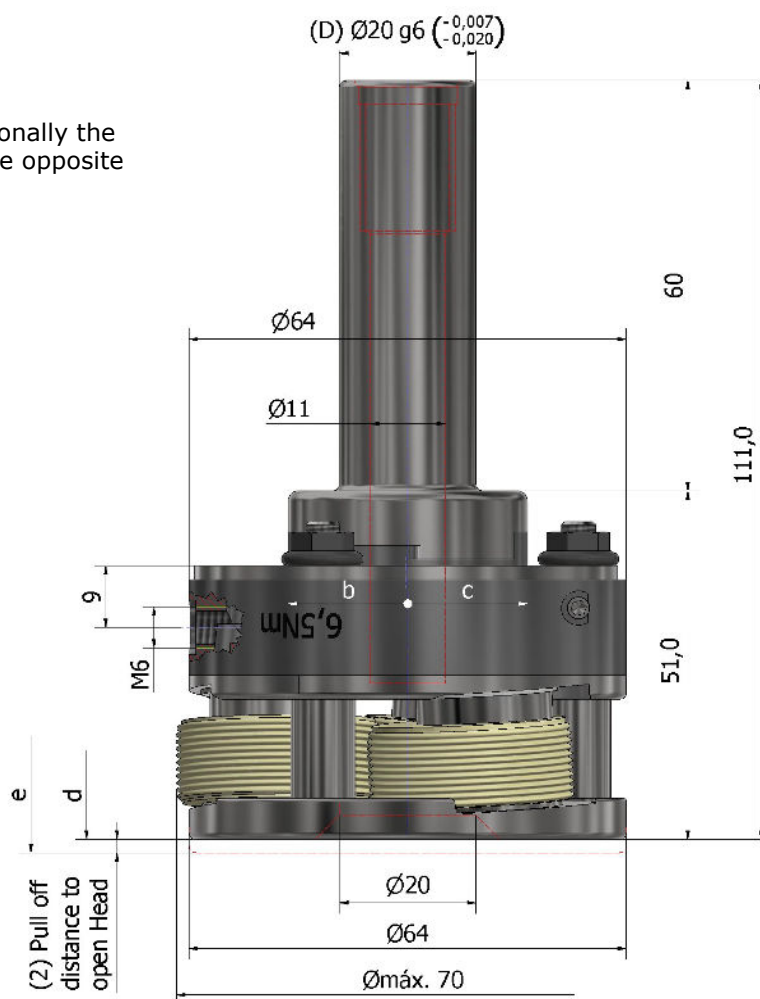
d= Rolling Head closed

e= Rolling Head opened

α= Closing angle 60°



#### General dimensions



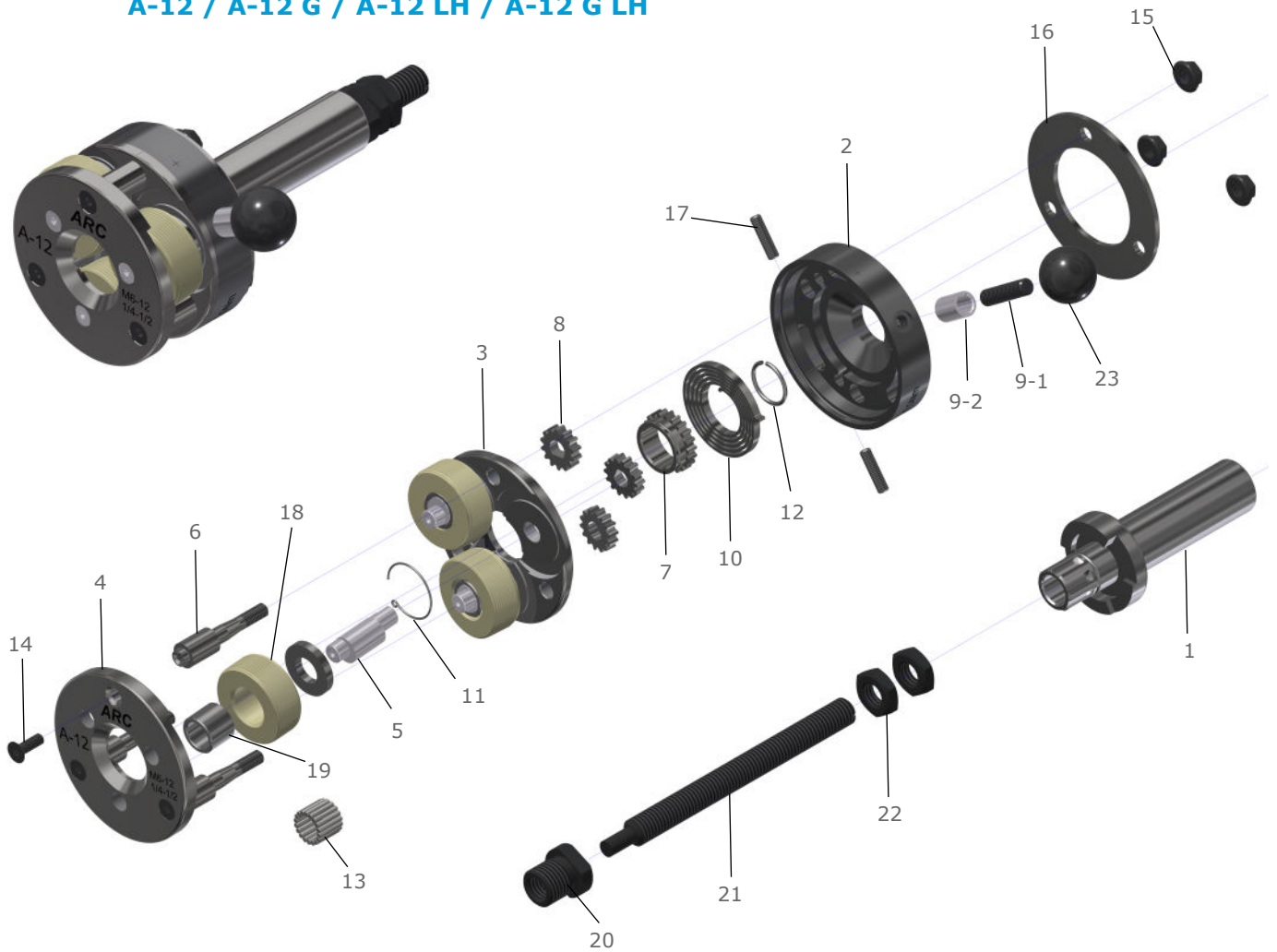
#### Working range

MF	MF	UN / UNF UNEF / UN	UN / UNF UNEF / UN	BSFS
M 6 ... 7 x 0.5	M 8 ... 9 x 1	UNS 1/4 ... 5/16 - 40	UNEF 7/16 ... 1/2 - 28	BSFS 1/4 ... 5/16 - 32
M 7 ... 8 x 0.5	M 9 ... 10 x 1	UNF 5/16 ... 5/8 - 36	UNF 7/16 ... 1/2 - 26	BSFS 5/16 ... 3/8 - 26
M 6 ... 7 x 0.75	M 10 ... 11 x 1	UNF 7/16 - 36	UNS 3/8 ... 7/16 - 24	BSFS 5/16 ... 3/8 - 32
M 8 ... 9 x 0.75	M 11 ... 12 x 1	UNEF 5/16 ... 3/8 - 32	UNS 7/16 ... 1/2 - 24	BSFS 7/16 ... 1/2 - 26
M 9 ... 10 x 0.75	M 10 ... 11 x 1.25	UN 3/8 ... 7/16 - 32	UNF 7/16 ... 1/2 - 22	BSFS 7/16 ... 1/2 - 20
M 10 ... 11 x 0.75	M 11 ... 12 x 1.25	UNF 7/16 ... 1/2 - 32	UNF 7/16 ... 1/2 - 20	
M 11 ... 12 x 0.75	M 10 ... 11 x 1	UNF 3/8 ... 7/16 - 28		

G	NPT NPTF
G 1/8 - 28	NPT 1/8 - 27
G 1/4 - 19	NPT 1/4 - 18
	NPTF 1/8 - 27

## SPARE PARTS FOR ROLLING HEADS

A-12 / A-12 G / A-12 LH / A-12 G LH



### Spare parts list for rolling heads

Part. No	Qty.	Part Description
1	1	Shank
2	1	Spring Housing
3	1	Back Plate
4	1	Front Plate
5	3	Eccentric Spindles
6	3	Spacer Studs
7	1	Center Gear
8	3	Outer Gear
9-1	1	Handle Stud
9-2	1	Handle bushing
10	1	Spring
11	1	Circlip

Part. No	Qty.	Part Description
12	1	Circlip
13**	3	Needle Bearings
14	3	Cap Screw
15	3	Hexagon Nut
16	1	Ring Washer
17	2	Head stud
18	3	Thread Roll
20	1	Stop Sleeve
21	1	Stop Screw
22	2	Stop Screw lock-nut
25	3	Washer

\*\* on request can be supplied with carbide bushings.  
Part No.: 19 Quantity: 3