

AXIAL ROLLING SYSTEMS

A-23 / A-23 G / A-23 LH / A-23 G LH

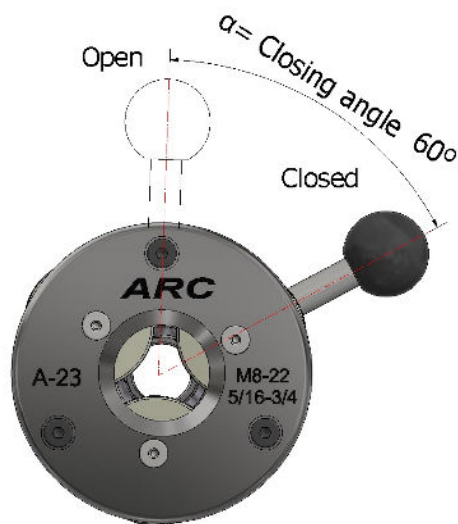
Ø Shank (D)	25	30	1"	1"1/4	1"1/2	VDI	VDI	VDI
	mm.	mm.				25	30	40

for right-hand threads

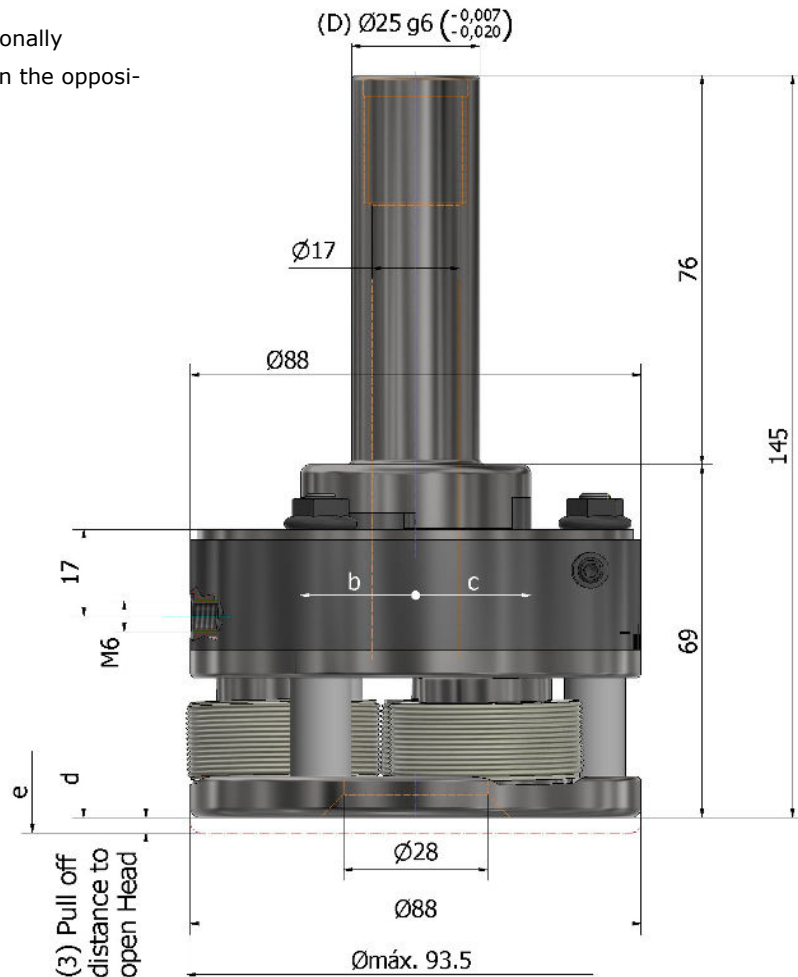
- A-23 to be used stationary only
- A-23 G for stationary and rotary use
- A-23 LH, A-23 G LH (Left hand heads are dimensionally the same as right hand heads but open and close on the opposite direction.)

- inclined position of rolls = 1°25'
- weight without rolls = approx. 1.8Kg.

- a= Pull off for opening
- b= head opens type A-23 G, open type A-23
- c= head opens type A-23, open type A-23 G
- d= Rolling Head closed
- e= Rolling Head opened
- α= Closing angle 60°



General dimensions

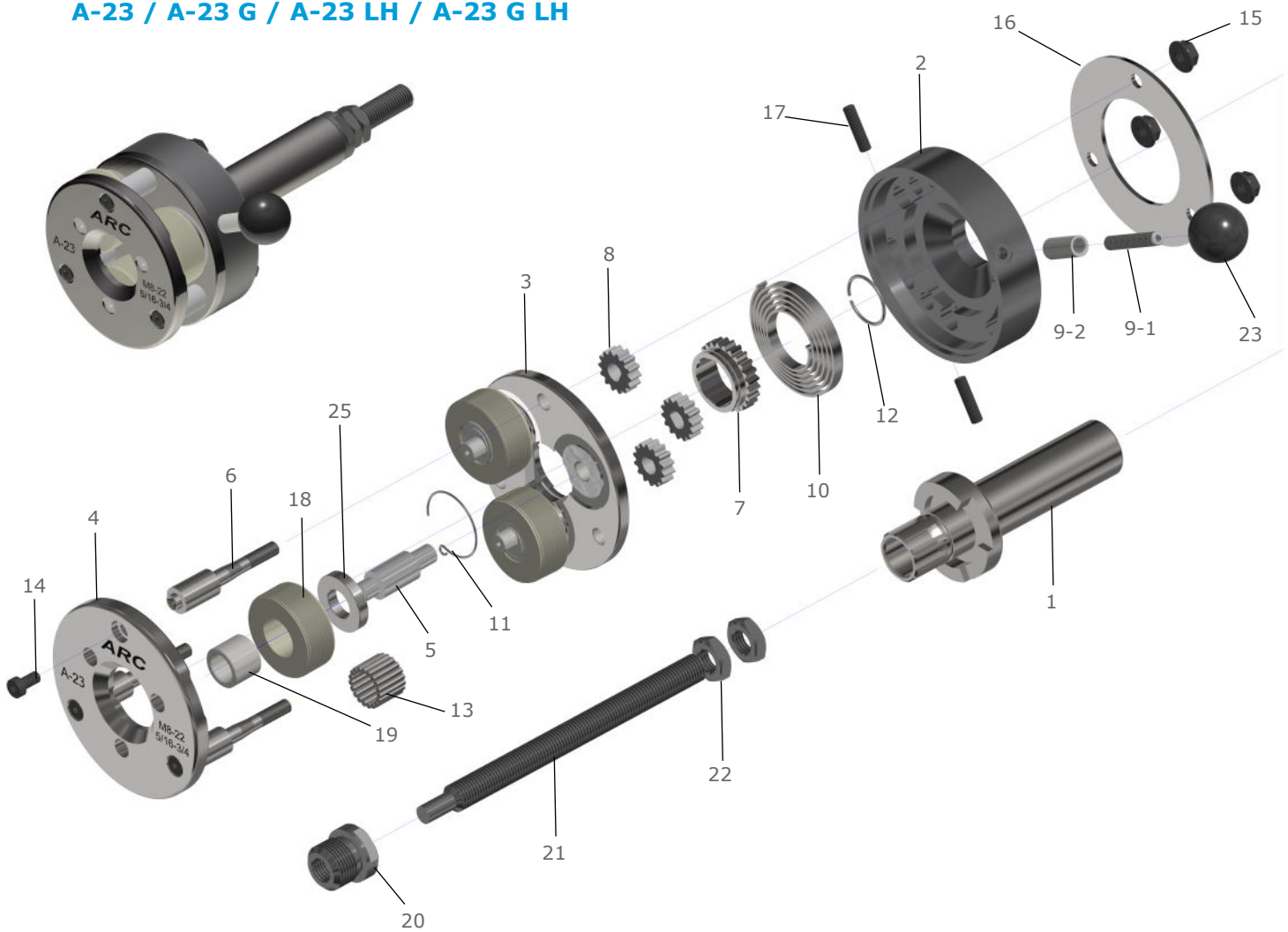


Working range

MF	UN / UNF / UNEF	BSFS	G	NPT NPTF
M 8 ... 10 x 0.5	UNEF 5/16... 3/8 - 32	BSFS 5/16... 3/8 - 32	G 1/8 - 28	NPT 1/8 - 27
M 8 ... 10 x 0.75	UNEF 3/8... 7/16 - 32	BSFS 7/16... 1/2 - 26	G 1/4 - 19	NPT 1/4 - 18
M 10 ... 12x 0,75	UNEF 7/16... 1/2 - 28	BSFS 1/2... 9/16 - 20	G 3/8 - 19	NPT 3/8 - 18
M 10 ... 12x 1	UN 7/16... 1/2 - 32	BSFS 1/2... 9/16 - 26		
M 12 ... 14x 1	UN 1/2... 9/16 - 20	BSFS 9/16... 5/8 - 20		
M 14 ... 16x 1	UN 1/2... 9/16 - 28	BSFS 9/16... 5/8 - 26		
M 16 ... 18x 1	UN 1/2... 9/16 - 32	BSFS 5/8... 11/16 - 20		NPTF 1/8 - 27
M 18 ... 20x 1	UNF 9/16... 5/8 - 18	BSFS 5/8... 11/16 - 26		NPTF 1/4 - 18
M 14 ... 16x 1.25	UN 9/16... 5/8 - 20	BSFS 3/4... 13/16 - 26		NPTF 3/8 - 18
M 16 ... 18x 1.5	UNEF 9/16... 5/8 - 24	BSFS 3/4... 13/16 - 20		
M 18 ... 20x 1.5	UN 9/16... 5/8 - 28	BSFS 3/4... 13/16 - 16		
M 20 ... 22x 1.5	UN 9/16... 5/8 - 32	BSFS 13/16... 7/8 - 20		
	UN 5/8... 11/16 - 16			
	UN 5/8... 11/16 - 20			
	UNEF 5/8... 11/16 - 24			
	UN 5/8... 11/16 - 28			
	UNF 11/16... 3/4 - 16			
	UNEF 11/16... 3/4 - 20			
	UN 3/4... 13/16 - 16			
	UNEF 3/4... 13/16 - 20			
	UNEF 13/16... 7/8 - 20			

SPARE PARTS FOR ROLLING HEADS

A-23 / A-23 G / A-23 LH / A-23 G LH



Spare parts list for rolling heads

Part. No	Qty.	Part Description
1	1	Shank
2	1	Spring Housing
3	1	Back Plate
4	1	Front Plate
5	3	Eccentric Spindles
6	3	Spacer Studs
7	1	Center Gear
8	3	Outer Gear
9-1	1	Handle Stud
9-2	1	Handle bushing
10	1	Spring
11	1	Circlip

Part. No	Qty.	Part Description
12	1	Circlip
13**	57	Needle Bearings
14	3	Cap Screw
15	3	Hexagon Nut
16	1	Ring Washer
17	2	Head stud
18	3	Thread Roll
20	1	Stop Sleeve
21	1	Stop Screw
22	2	Stop Screw lock-nut
25	3	Washer

** on request can be supplied with carbide bushings. Part No.: 19 Quantity: 3