

A-2x286 / A-2x286 G

| ∅ Shank (D) | 25 | 30 | 1" | 1 1/4" | 1 1/2" | VDI 25 | VDI 30 | VDI 40 |
|-------------|-----|-----|----|--------|--------|--------|--------|--------|
| | mm. | mm. | | | | | | |

General dimensions

for right-hand threads

- A-2x286 to be used stationary only
- A-2x286 G for stationary and rotary use
- inclined position of rolls = 3°
- weight without rolls = approx. 1.8Kg.

a= Pull off for opening

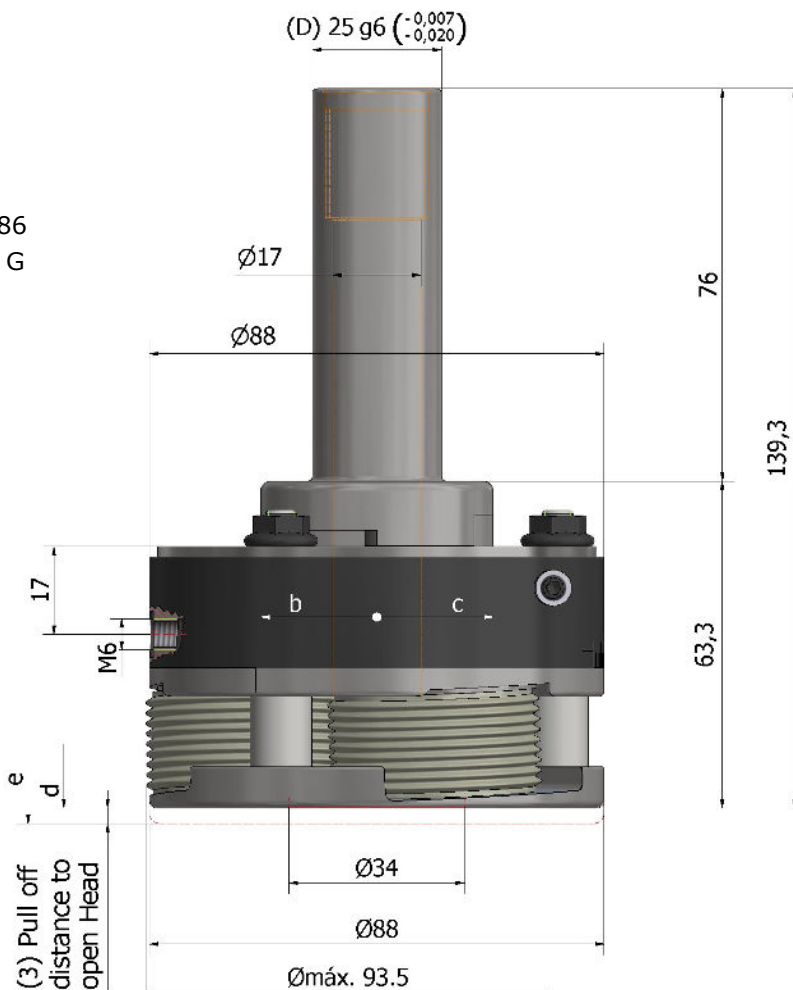
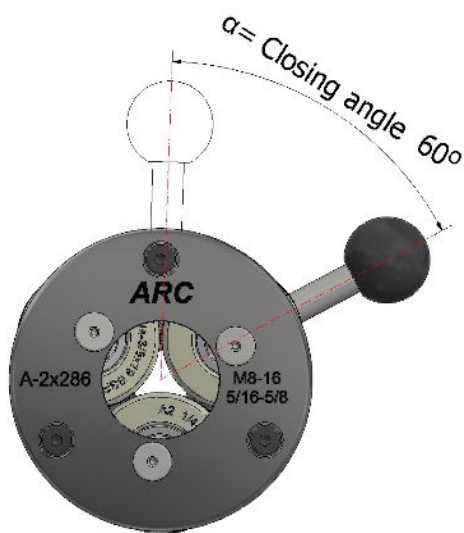
b= head opens type A-2x286 G, closes type A-2x286

c= head opens type A-2x286, closes type A-2x286 G

d= Rolling Head closed

e= Rolling Head opened

α= Closing angle 60°

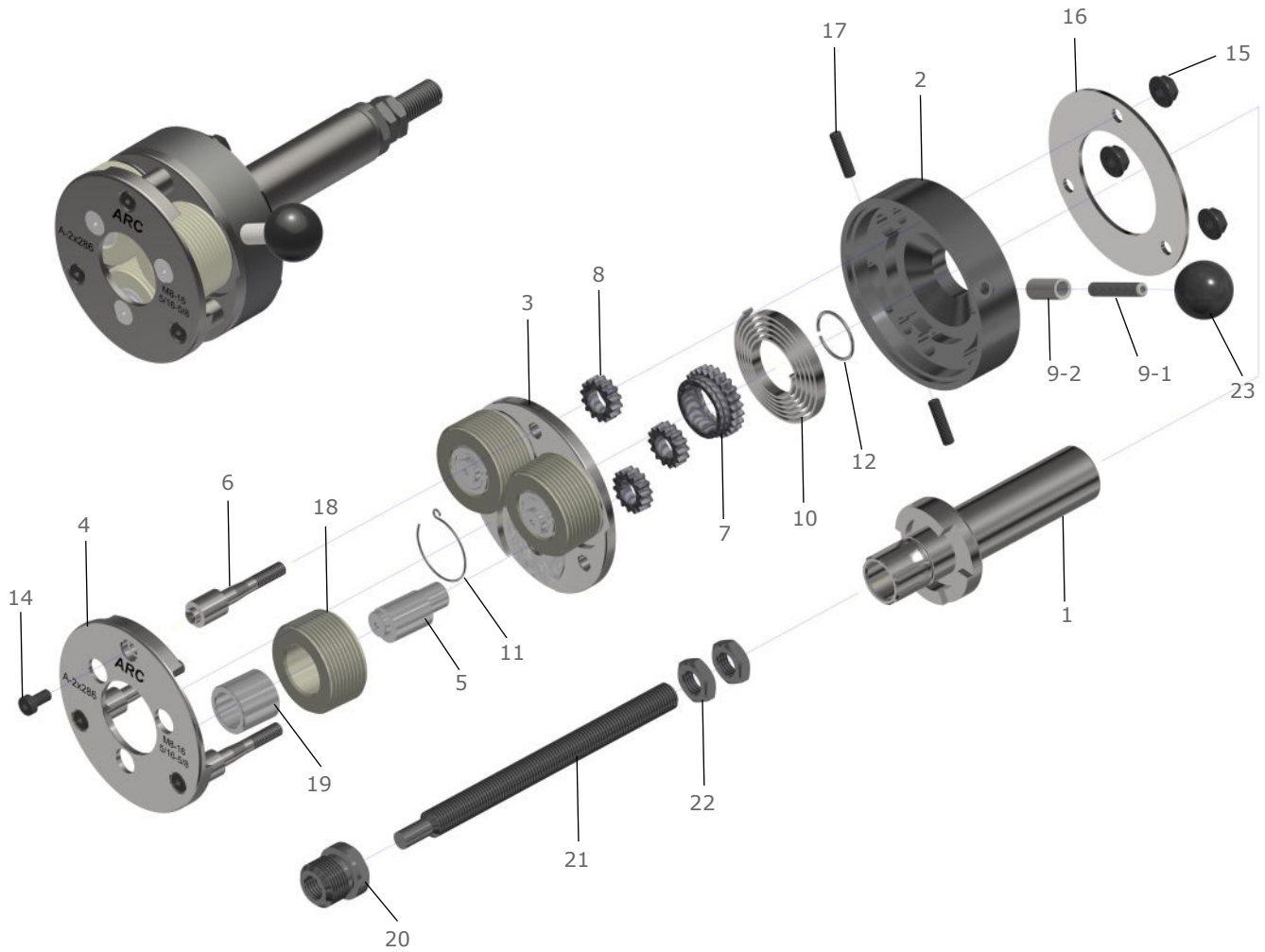


Working range

| M | MF | UNC | UNF | BSW |
|---|--|---|---|--|
| M 8 ... 10 x 1,25 M 10 ... 12 x 1,5 M 12 ... 14 x 1,75 M 14 ... 16 x 2 | MF 8 ... 10 x 1 MF 10 ... 12 x 1,25 MF 12 ... 14 x 1,5 | UNC 5/16 - 18 UNC 3/8 - 16 UNC 7/16 - 14 UNC 1/2 - 13 UNC 9/16 - 12 UNC 5/8 - 11 | UNF 5/16... 3/8 - 24 UNF 7/16... 1/2 - 20 UNF 9/16... 5/8 - 18 | BSW 5/16 - 18 BSW 3/8 - 16 BSW 7/16 - 14 BSW 1/2... 9/16 - 12 BSW 5/8 - 11 |
| BSF | G | RD | NPT NPTF | RAA RGE |
| BSF 5/16 - 22 BSF 3/8 - 20 BSF 7/16 - 18 BSF 1/2... 9/16 - 16 BSF 5/8... 11/16 - 14 | G 1/8 - 28 G 1/4 - 19 G 3/8 - 19 | Rd 16 x 1/8 | NPT 1/8 - 27 NPT 1/4 - 18 NPT 3/8 - 18 NPTF 1/8 - 27 NPTF 1/4 - 18 NPTF 3/8 - 18 | ∅8 ... ∅ 10 x 0,5 ~ ∅14 ... ∅ 16 x 2,0 |

SPARE PARTS FOR ROLLING HEADS

A-2x286 / A-2x286 G



Spare parts list for rolling heads

| Part. No | Qty. | Part Description |
|----------|------|--------------------|
| 1 | 1 | Shank |
| 2 | 1 | Spring Housing |
| 3 | 1 | Back Plate |
| 4 | 1 | Front Plate |
| 5 | 3 | Eccentric Spindles |
| 6 | 3 | Spacer Studs |
| 7 | 1 | Center Gear |
| 8 | 3 | Outer Gear |
| 9-1 | 1 | Handle Stud |
| 9-2 | 1 | Handle bushing |
| 10 | 1 | Spring |
| 11 | 1 | Circlip |

| Part. No | Qty. | Part Description |
|----------|------|---------------------|
| 12 | 1 | Circlip |
| 14 | 3 | Cap Screw |
| 15 | 3 | Hexagon Nut |
| 16 | 1 | Ring Washer |
| 17 | 2 | Head stud |
| 18 | 3 | Thread Roll |
| 19 | 3 | Carbide Bushing |
| 20 | 1 | Stop Sleeve |
| 21 | 1 | Stop Screw |
| 22 | 2 | Stop Screw lock-nut |