

## AXIAL ROLLING SYSTEMS

### A-23x212 / A-23x212 G

∅ Shank (D)	25 mm.	30 mm.	1"	1 1/4"	1 1/2"	VDI 25	VDI 30	VDI 40
-------------	--------	--------	----	--------	--------	--------	--------	--------

### General dimensions

#### for right-hand threads

- A-23x212 to be used stationary only
- A-23x212 G for stationary and rotary use
- inclined position of rolls = 1°25'
- weight without rolls = approx. 1.8Kg.

a= Pull off for opening

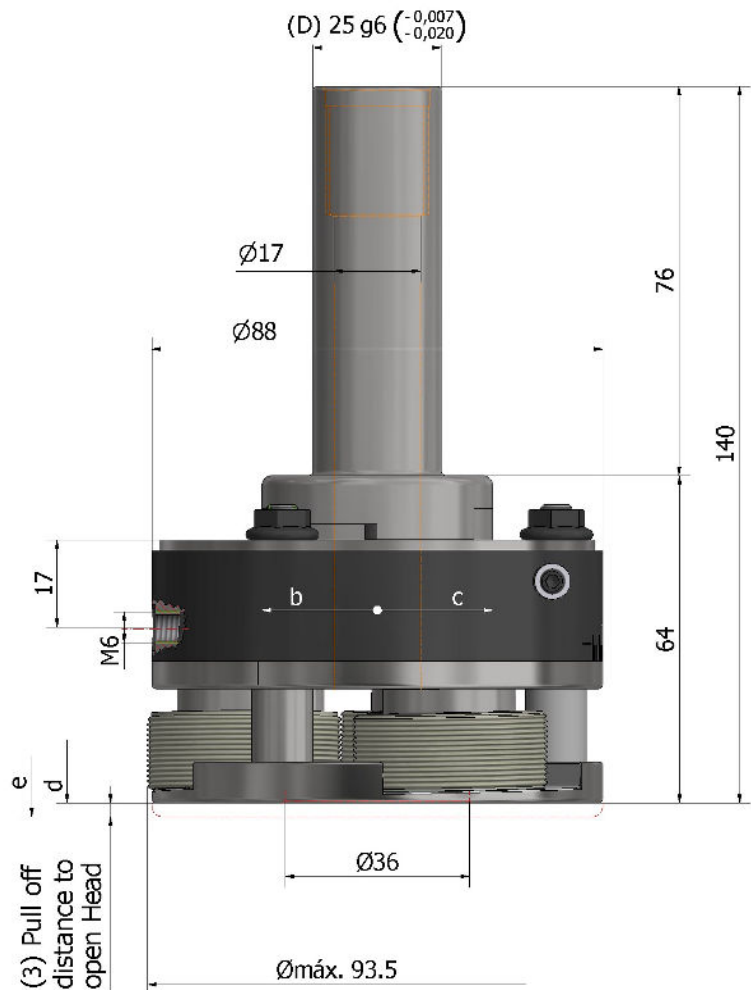
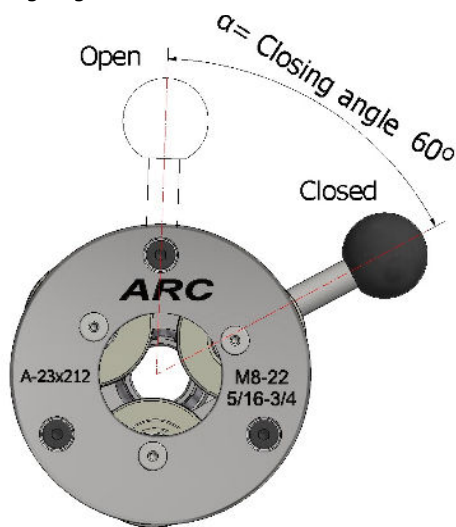
b= head opens type A-23x212 G, closes type A-23x212

c= head opens type A-23x212, closes type A-23x212 G

d= Rolling Head closed

e= Rolling Head opened

α= Closing angle 60°



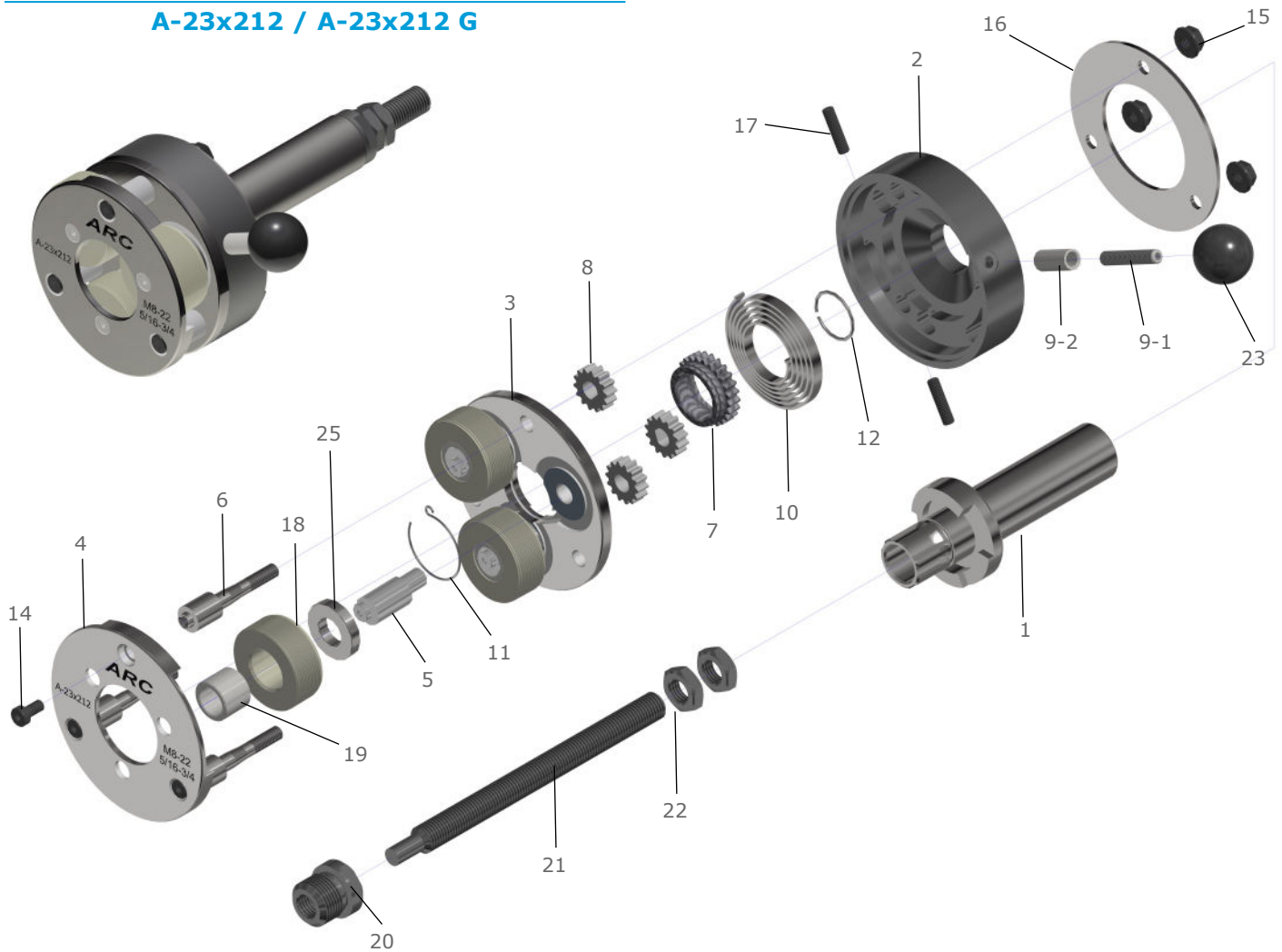
### Working range

MF	UN / UNF / UNEF	BSFS	G	NPT NPTF
M 8 ... 10 x 0.5	UNEF 5/16... 3/8 - 32	BSFS 5/16... 3/8 - 32	G 1/8 - 28	NPT 1/8 - 27
M 8 ... 10 x 0.75	UNEF 3/8... 7/16 - 32	BSFS 7/16... 1/2 - 26	G 1/4 - 19	NPT 1/4 - 18
M 10 ... 12x 0,75	UNEF 7/16... 1/2 - 28	BSFS 1/2... 9/16 - 20	G 3/8 - 19	NPT 3/8 - 18
M 10 ... 12x 1	UN 7/16... 1/2 - 32	BSFS 1/2... 9/16 - 26		
M 12 ... 14x 1	UN 1/2... 9/16 - 20	BSFS 9/16... 5/8 - 20		
M 14 ... 16x 1	UN 1/2... 9/16 - 28	BSFS 9/16... 5/8 - 26		
M 16 ... 18x 1	UN 1/2... 9/16 - 32	BSFS 5/8... 11/16 - 20		NPTF 1/8 - 27
M 18 ... 20x 1	UNF 9/16... 5/8 - 18	BSFS 5/8... 11/16 - 26		NPTF 1/4 - 18
M 14 ... 16x 1.25	UN 9/16... 5/8 - 20	BSFS 3/4... 13/16 - 26		NPTF 3/8 - 18
M 16 ... 18x 1.5	UNEF 9/16... 5/8 - 24	BSFS 3/4... 13/16 - 20		
M 18 ... 20x 1.5	UN 9/16... 5/8 - 28	BSFS 3/4... 13/16 - 16		
M 20 ... 22x 1.5	UN 9/16... 5/8 - 32	BSFS 13/16... 7/8 - 20		
	UN 5/8... 11/16 - 16			
	UN 5/8... 11/16 - 20			
	UNEF 5/8... 11/16 - 24			
	UN 5/8... 11/16 - 28			
	UNF 11/16... 3/4 - 16			
	UNEF 11/16... 3/4 - 20			
	UN 3/4... 13/16 - 16			
	UNEF 3/4... 13/16 - 20			

## SPARE PARTS FOR ROLLING HEADS



### A-23x212 / A-23x212 G



### Spare parts list for rolling heads

Part. No	Qty.	Part Description
1	1	Shank
2	1	Spring Housing
3	1	Back Plate
4	1	Front Plate
5	3	Eccentric Spindles
6	3	Spacer Studs
7	1	Center Gear
8	3	Outer Gear
9-1	1	Handle Stud
9-2	1	Handle bushing
10	1	Spring
11	1	Circlip

Part. No	Qty.	Part Description
12	1	Circlip
14	3	Cap Screw
15	3	Hexagon Nut
16	1	Ring Washer
17	2	Head stud
18	3	Thread Roll
19	3	Carbide Bushing
20	1	Stop Sleeve
21	1	Stop Screw
22	2	Stop Screw lock-nut
25	3	Washer