

**General dimensions**

Tipo	A1	A2	A3	L1	L2	L3	H1	H2	Ømáx.
RT-10	43	15.45	7.15	69.3	10.5	máx. / min.	máx. / min.	14	31.5
RT-20	58	21.3	11	100	16	27.6 / 23.2	40 / 26.5	19.75	44
RT-30	83	31	15.8	138	20.17	37.8 / 30.1	61 / 40.5	28.1	63

Av = Work advance

Dmáx = max. shoulder diameter

For left-hand threads, the same rolling attachment can be used as for right-hand threads.

Left-hand threads require left-hand rolls.

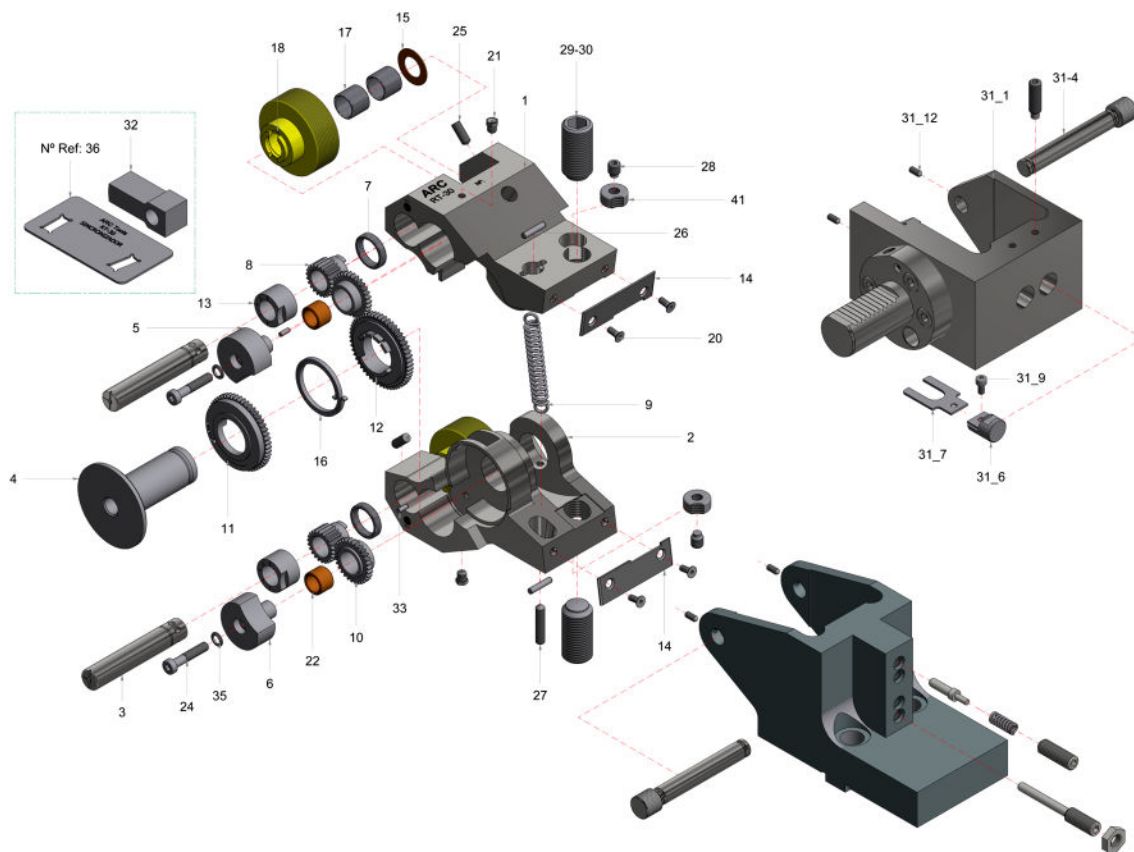
**Working range**

Type	Cylindrical Threads		Tapered Threads		
	Major Diameter máx. / min.	máx. pitch mm. / h"	Standard	min.	máx
RT-10	14 / 1.6	1.5 / 16	DIN 158 DIN 2999 DIN 3858 ANSI (B 1.20.1)	M 6 x 1 cón. R 1/16 - 28 R 1/8 - 28 1/16 - 27 NPT (NPTF)	M 14 x 1,5 cón. R 1/4 - 19 R 1/4 - 19 1/4 - 18 NPT (NPTF)
RT-20	30 / 2	02-dic	DIN 158 DIN 2999 DIN 3858 ANSI (B 1.20.1)	M 6 x 1 cón. R 1/16 - 28 R 1/8 - 28 1/16 - 27 NPT (NPTF)	M 30 x 1,5 cón. R 3/4 - 14 R 3/4 - 14 1/2 - 14 NPT (NPTF)
RT-30	42 / 2	2.5 / 10	DIN 158 DIN 2999 DIN 3858 ANSI (B 1.20.1)	M 6 x 1 cón. R 1/16 - 28 R 1/8 - 28 1/16 - 27 NPT (NPTF)	M 42 x 2 cón. R 3/4 - 14 R 3/4 - 14 3/4 - 14 NPT (NPTF)

## SPARE PARTS FOR ROLLING HEADS



### RT-10 / RT-20 / RT-30



### Spare parts list for rolling heads

Part. No	Qty.	Part Description
1	1	Upper Arm
2	1	Lower Arm
3	2	shafts
4	1	Central Shaft
5	1	Support Master
6	1	Support Master
7	2	Bush Support of H.M.
8	2	Pinion
9	1	Turnbuckle
10	2	Pinion
11	1	Pinion Ensemble
12	1	Pinion Ensemble
13	2	Bush Support Shaft
14	1	Upper Support Plate
14	1	Bottom Support Plate
15	2	Lateral Separator

Part. No	Qty.	Part Description
16	1	Central Spring Pinion
17	4	Carbide Bushing
18	2	Set of Rolls
20	4	Fixing Screws
21	2	Greaser
22	2	Bronze Bush
24	2	Fixing Screws
25	2	Fixing Screws
26	2	Pin
27	1	Allen Pin
28	2	Allen Pin
29-30	2	Stop Pin
33	2	Slotted pin
35	2	Glomer Washer
41	2	Brake Head